

general notes

general notes

- wof = width of fabric
- these instructions assume a usable wof of 40"
- all seams are 1/4"
- yardage calculations are generous to leave room for some cutting error
- yardage estimates are also rounded up to the nearest quarter yard

This 5x5x5 quilt pattern is composed of:

- a core set of 5 distinct blocks
- each of these core blocks is made up of a 5x5 grid of squares
- this pattern provides instructions for 2 sizes of cut squares: 3" and 4"
- to construct the final quilt, these 5 distinct blocks are replicated 5 times
- the resulting 25 blocks are used to create the final quilt
- each row of the final quilt is made up of quarter-turn rotations of the copies of a given block

To summarize:

- the final quilt has 5 rows and 5 columns of blocks
- each of these blocks is composed of 25 cut squares (in a 5x5 grid)
- there are 5 distinct blocks that are replicated 5 times
- each row of the final quilt is based on a distinct block and its four, quarter-turn rotations

quilt dimensions

the following calculations are for building block squares of size 3" and 4":

1. 3"x3" squares

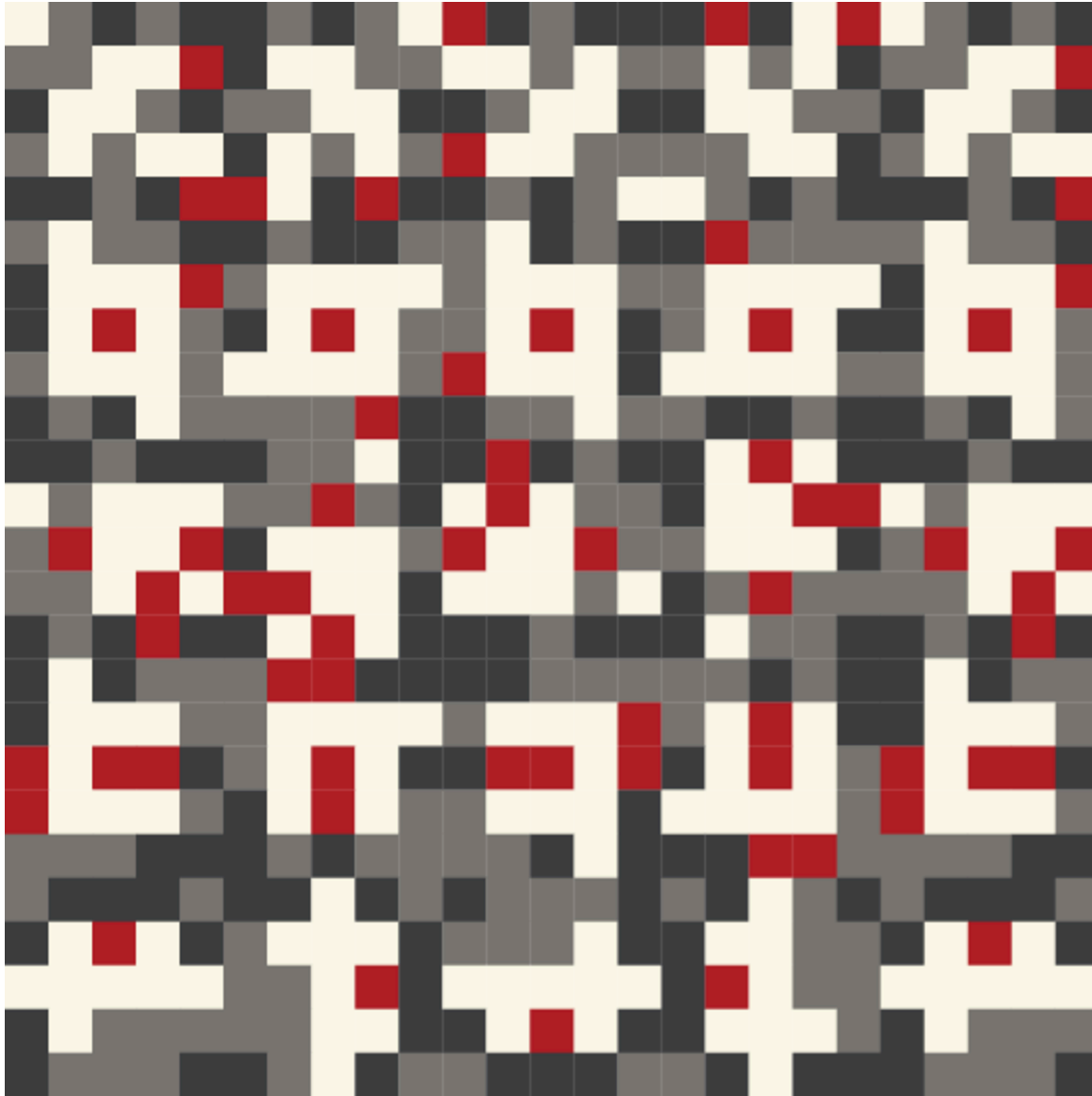
- to include a 1/4" seam allowance: cut squares to 3.5"x3.5"
- finished quilt size: 75"x75"
- # squares per wof=40" strip: 11
- finished quilt perimeter: 300"
- for the binding: cut eight 2.5" strips
- this translates to about 0.75yd of binding fabric

2. 4"x4" squares

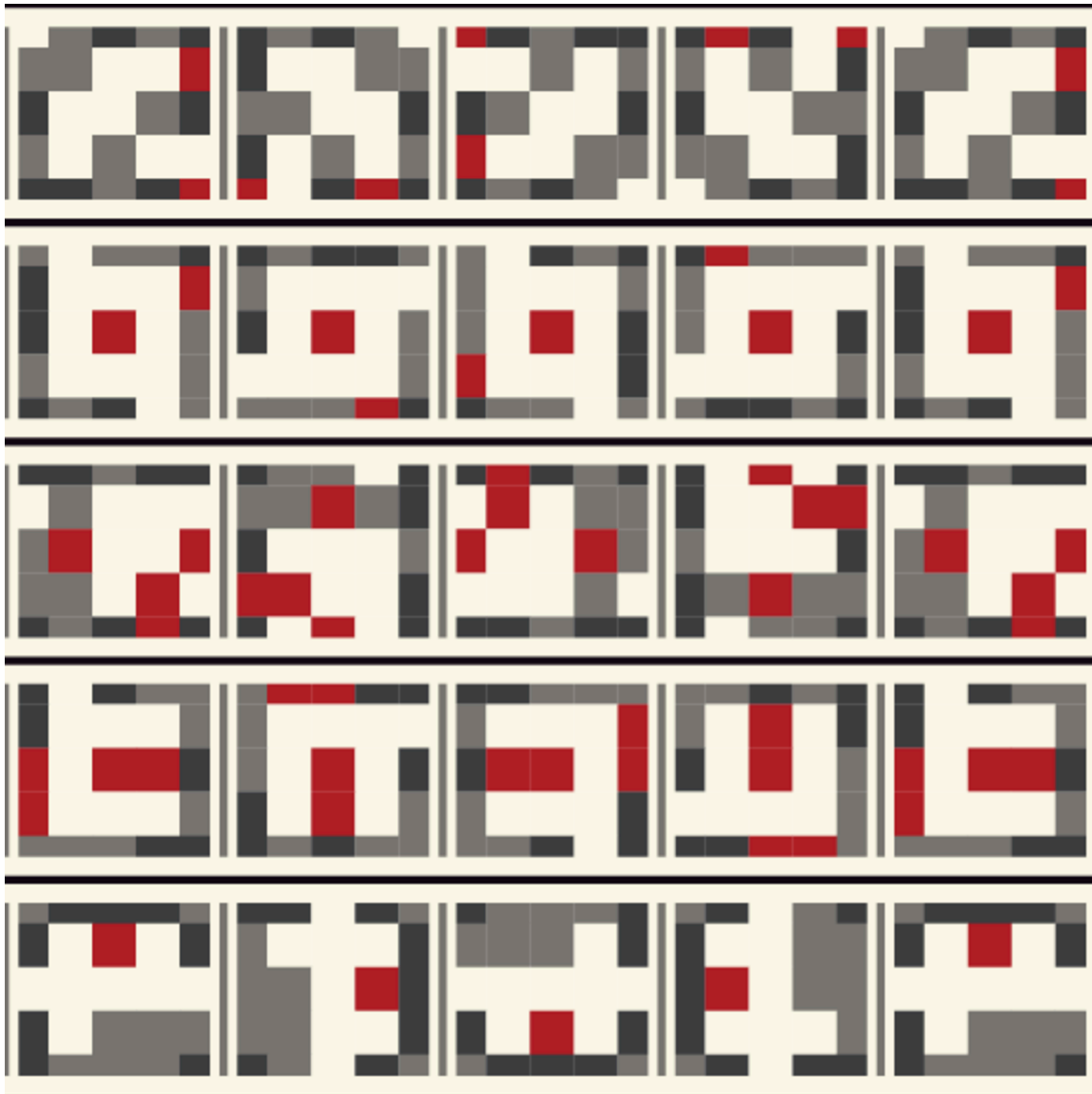
- to include a 1/4" seam allowance: cut squares to 4.5"x4.5"
- finished quilt size: 100"x100"
- # squares per wof=40" strip: 8
- finished perimeter: 400": cut 11, 2.5" strips
- recommended: purchase 1.0yd of binding fabric
- this translates to about 1.0yd of binding fabric

quilt set #2

quilt a001n05p002qset1657768068940q0001



quilt a001n05p002qset1657768068940q0001: block rows marked



quilt a001n05p002qset1657768068940q0001 measurements

measurements for darkgray fabric (Charcoal)

- total # of squares: 165
- 3" squares: yds: 1.75
- 4" squares: yds: 3

measurements for white fabric (Porcelain)

- total # of squares: 210
- 3" squares: yds: 2.25
- 4" squares: yds: 3.75

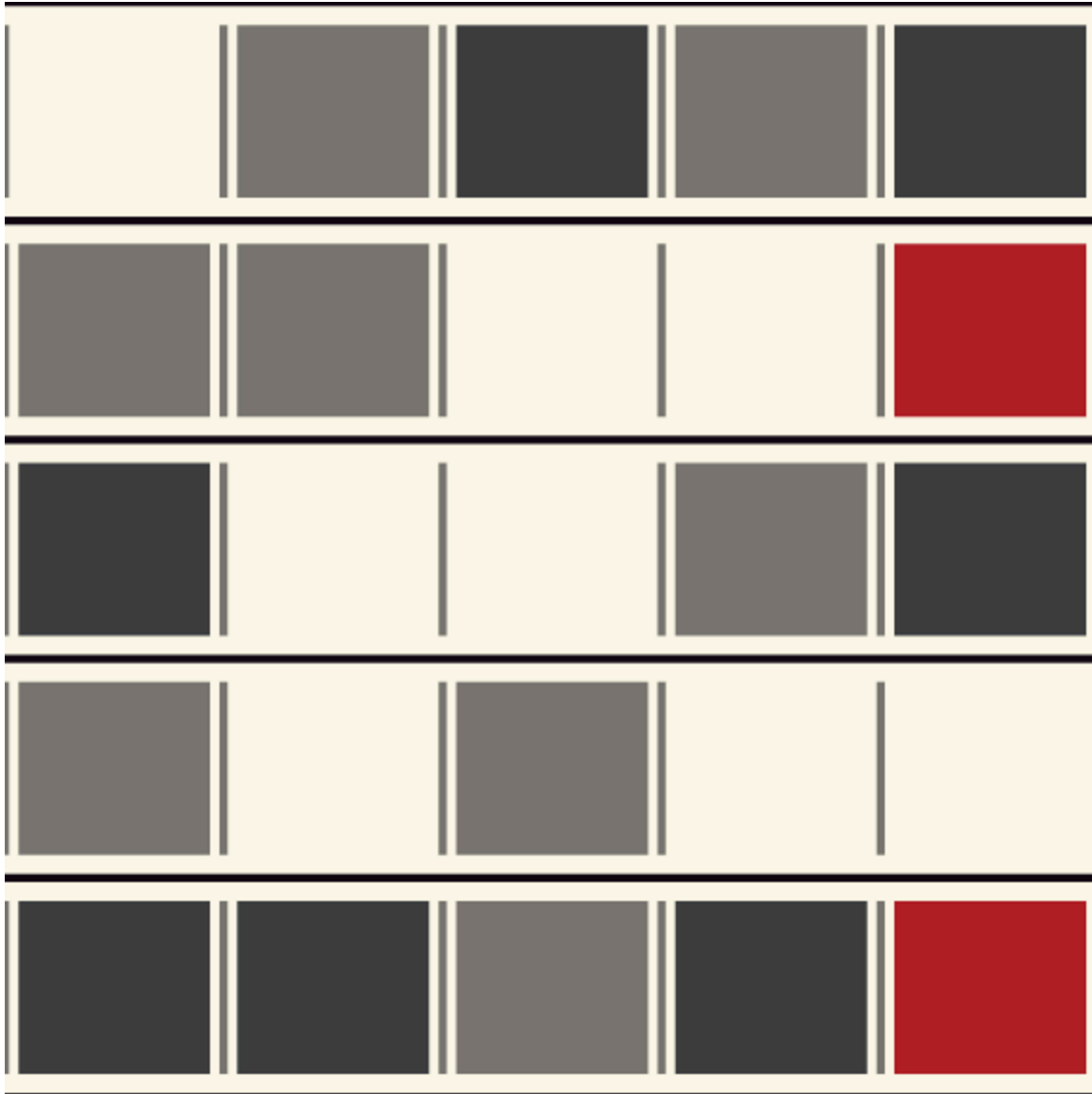
measurements for gray fabric (Etching Slate)

- total # of squares: 185
- 3" squares: yds: 2
- 4" squares: yds: 3.25

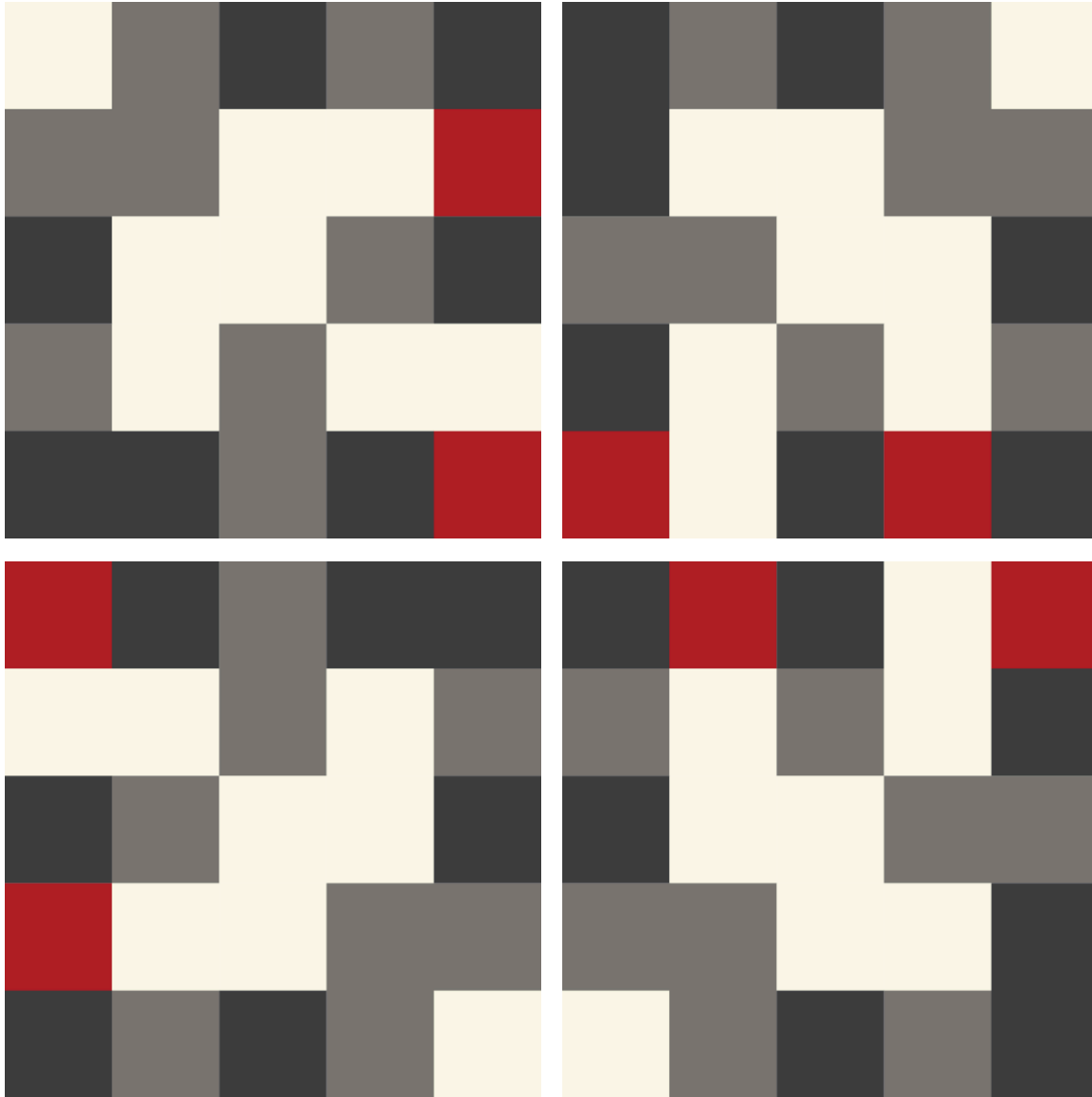
measurements for red fabric (Country Red)

- total # of squares: 65
- 3" squares: yds: 0.75
- 4" squares: yds: 1.25

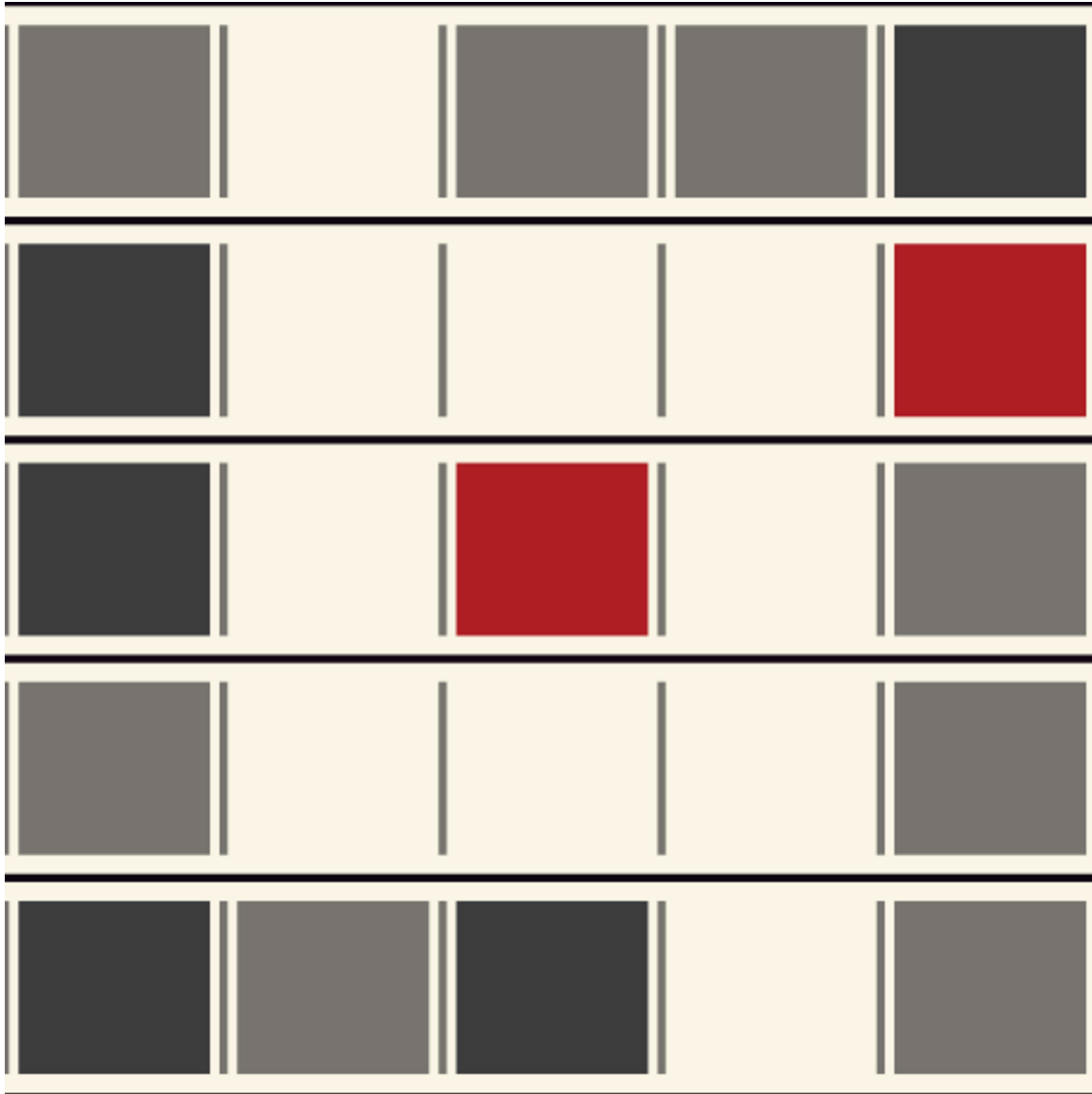
quilt q0001, block 00



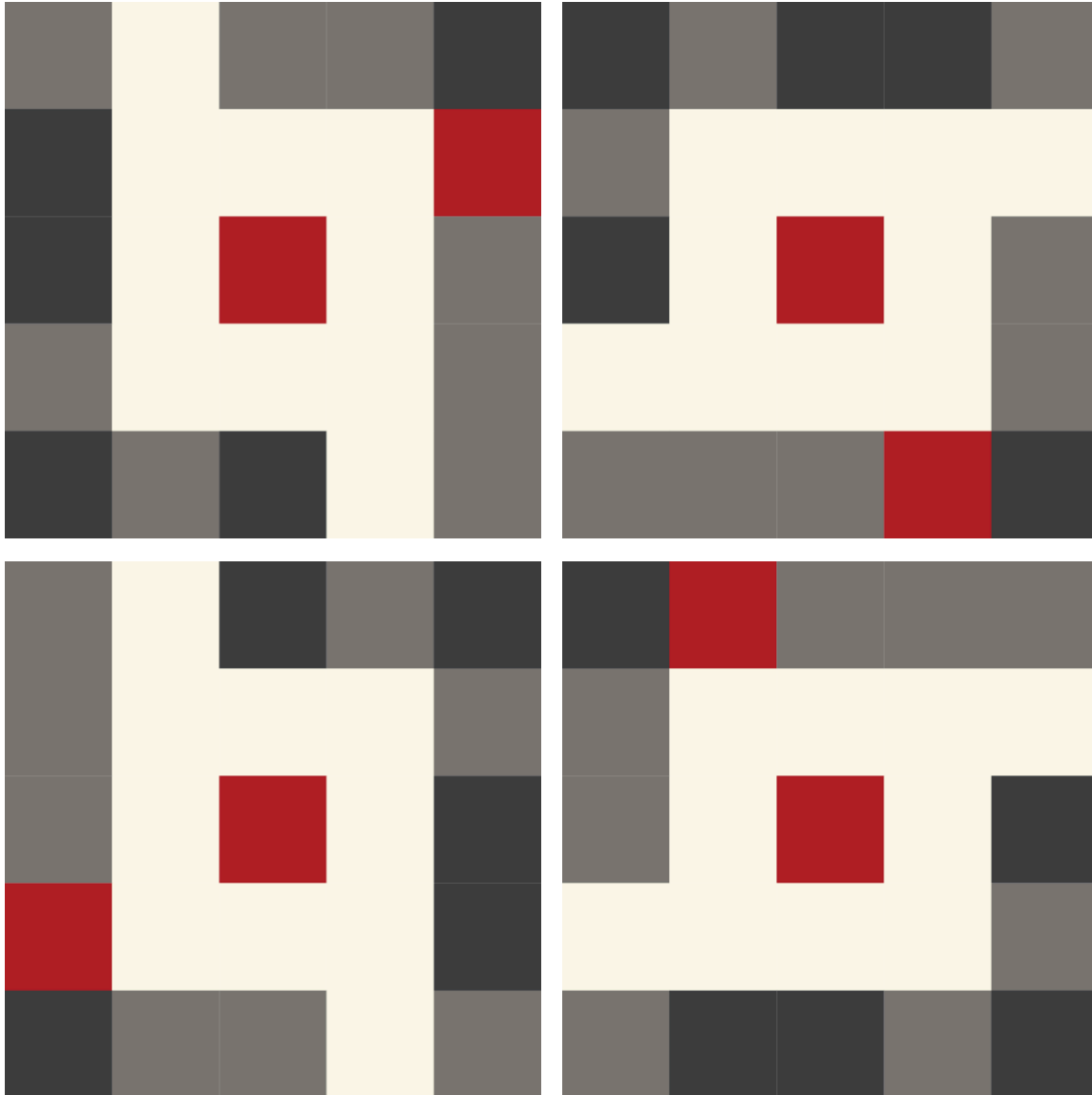
rotations: quilt q0001, block 00



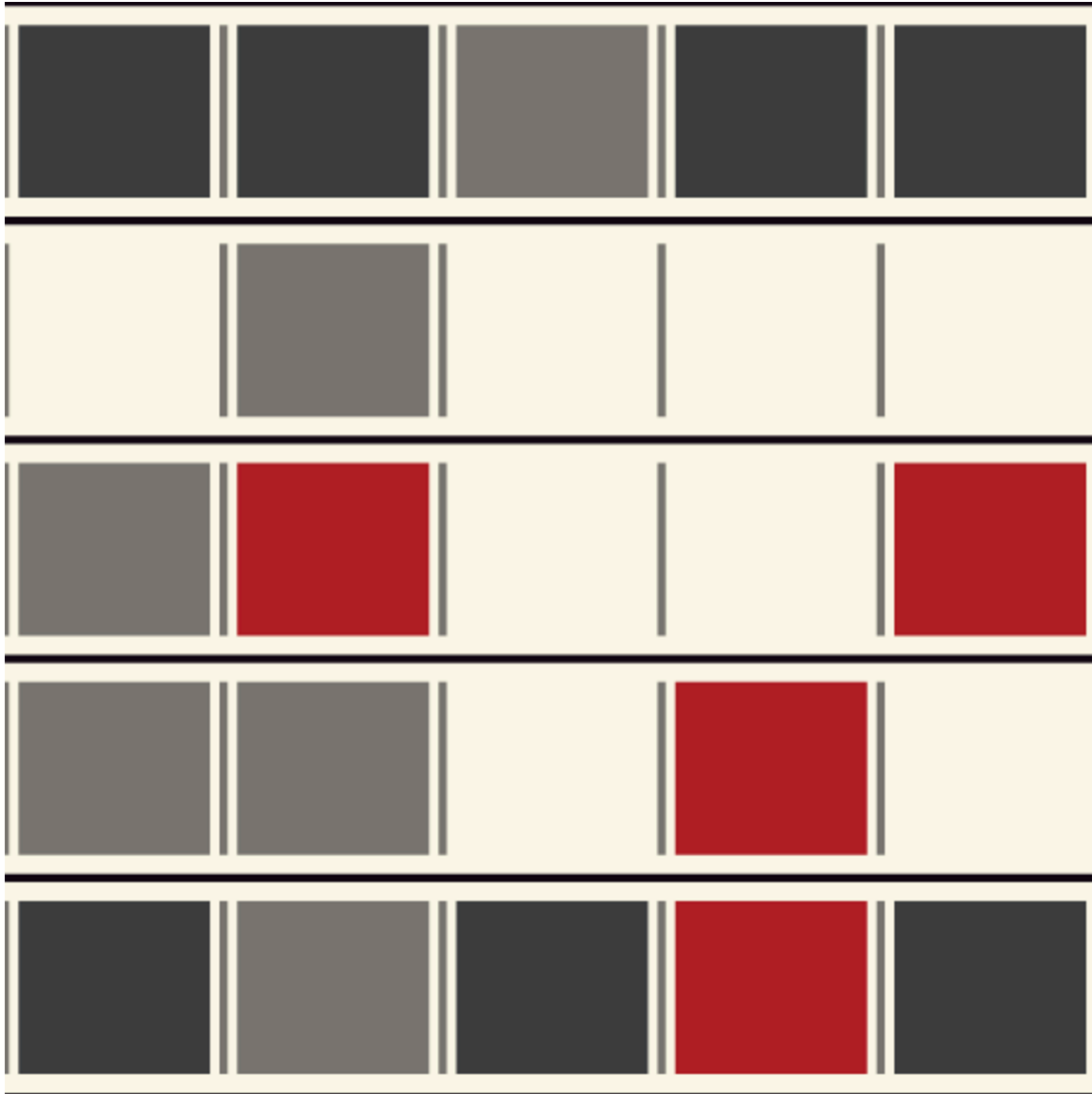
quilt q0001, block 01



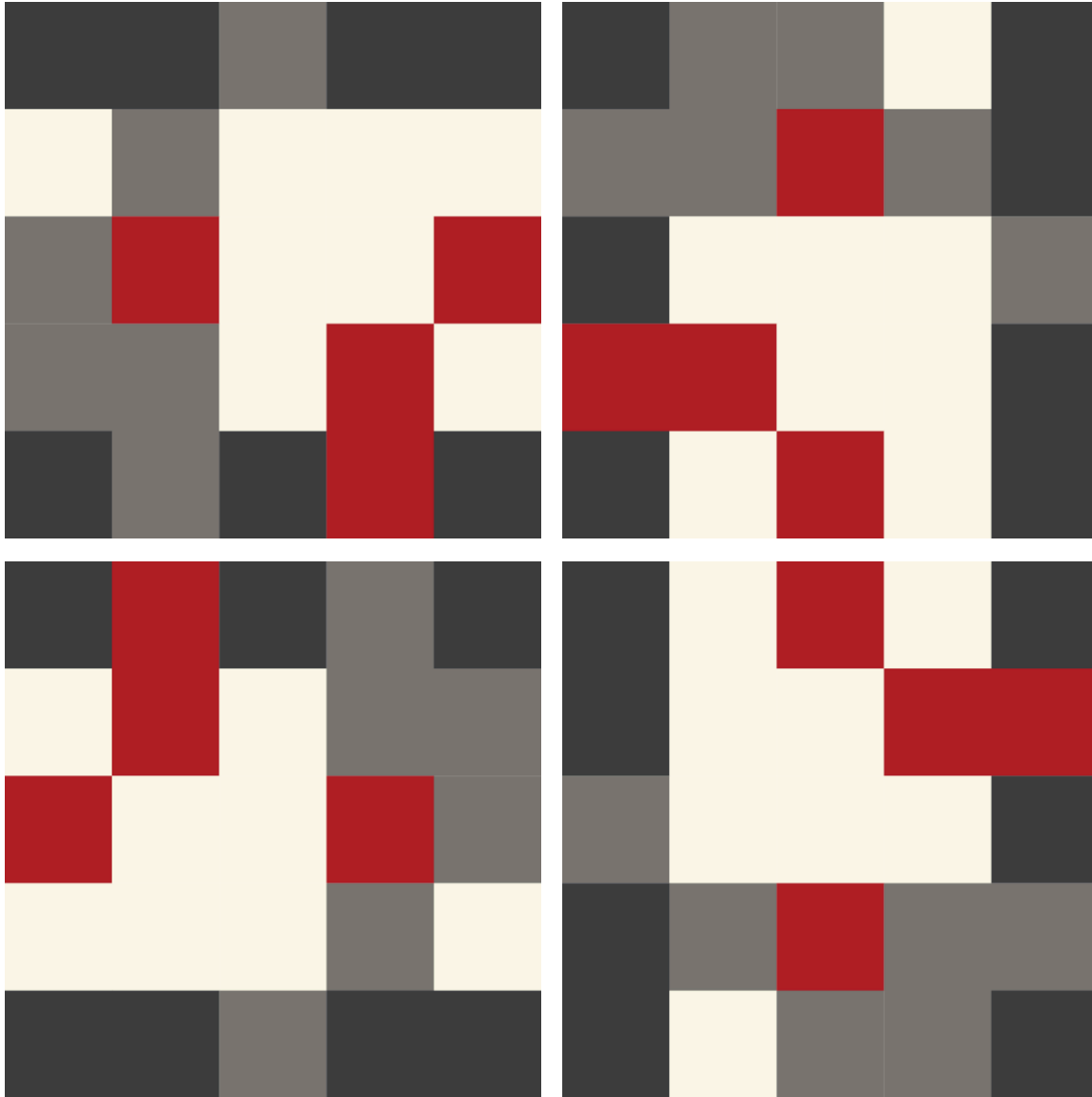
rotations: quilt q0001, block 01



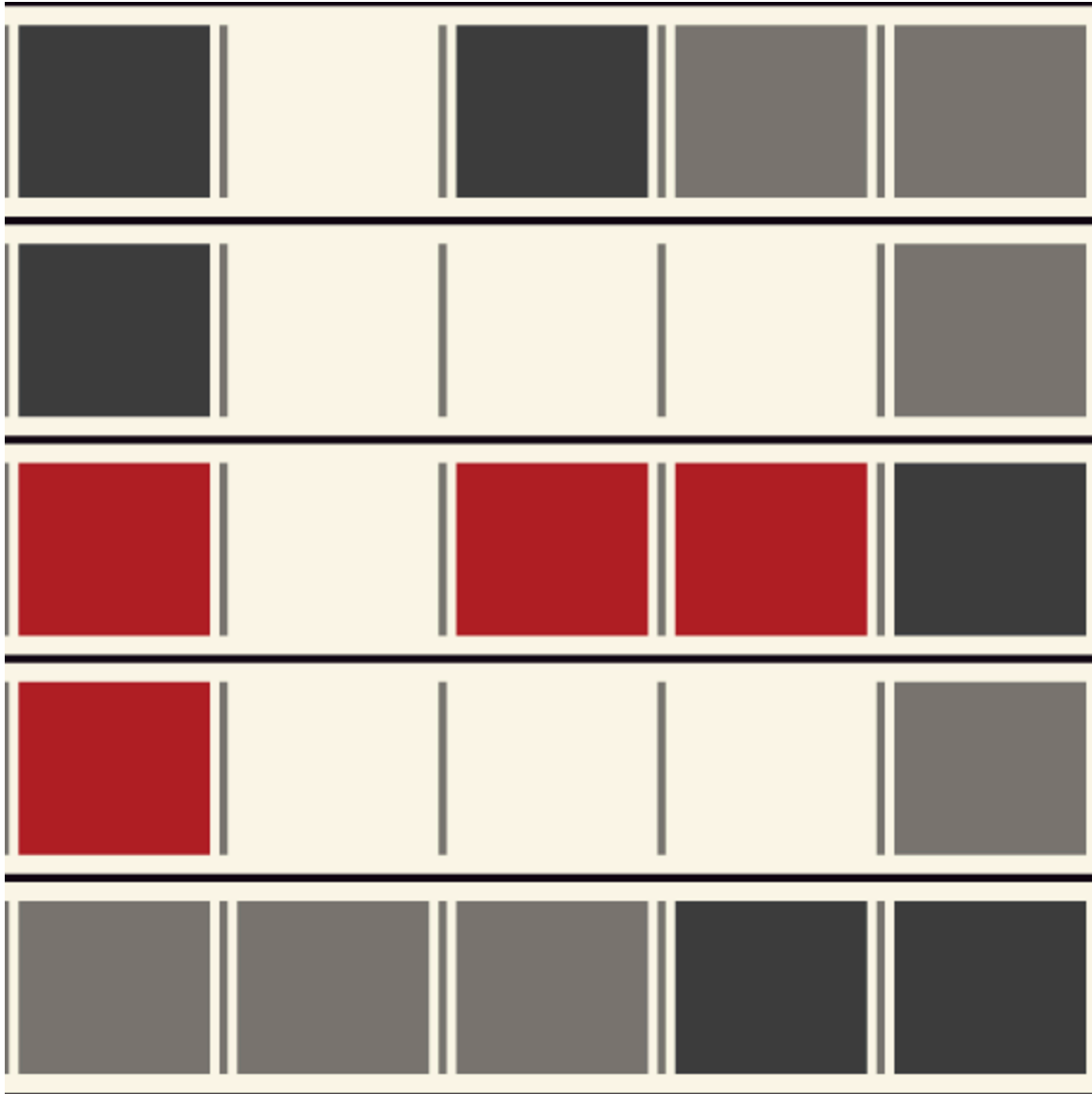
quilt q0001, block 02



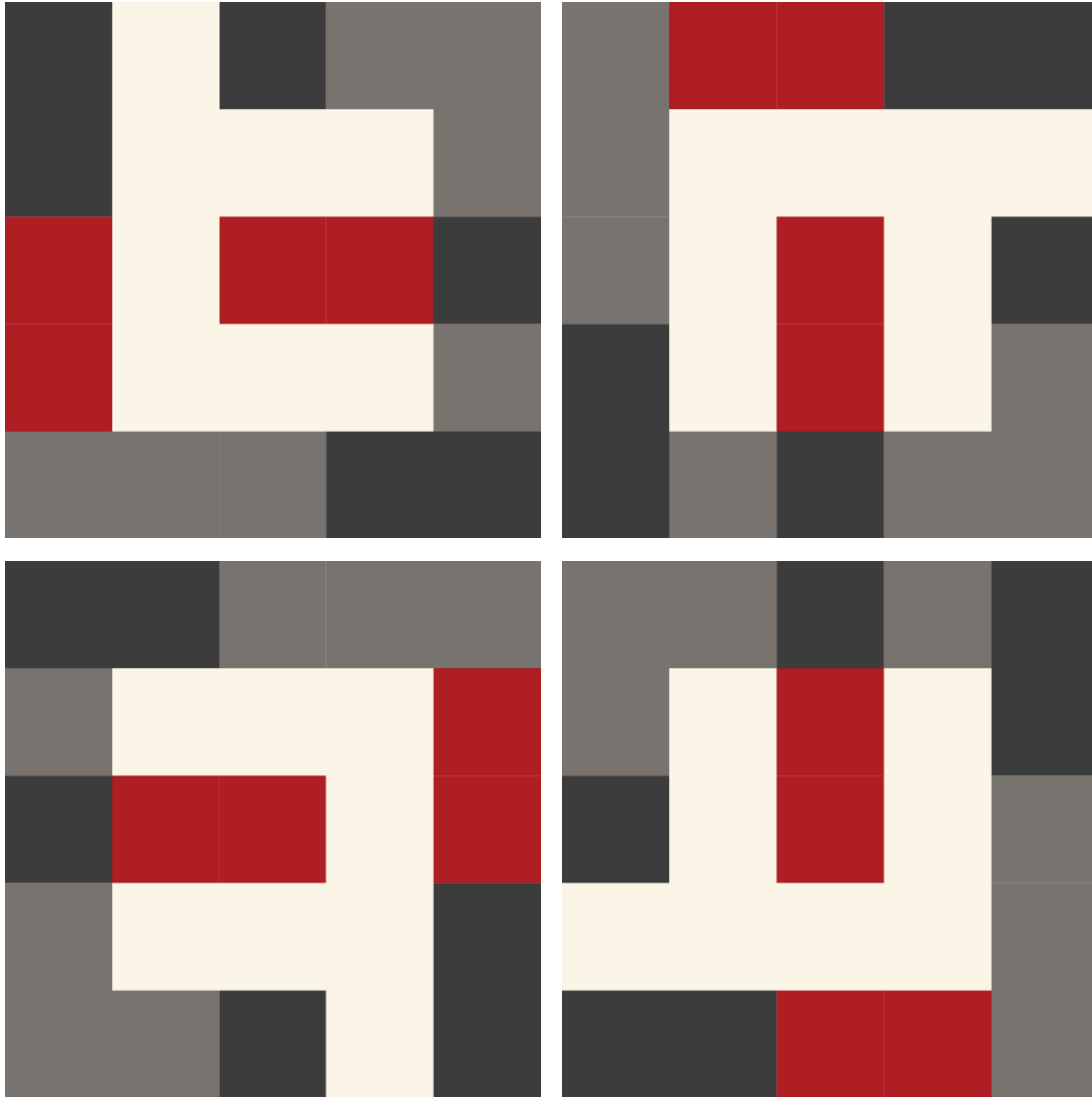
rotations: quilt q0001, block 02



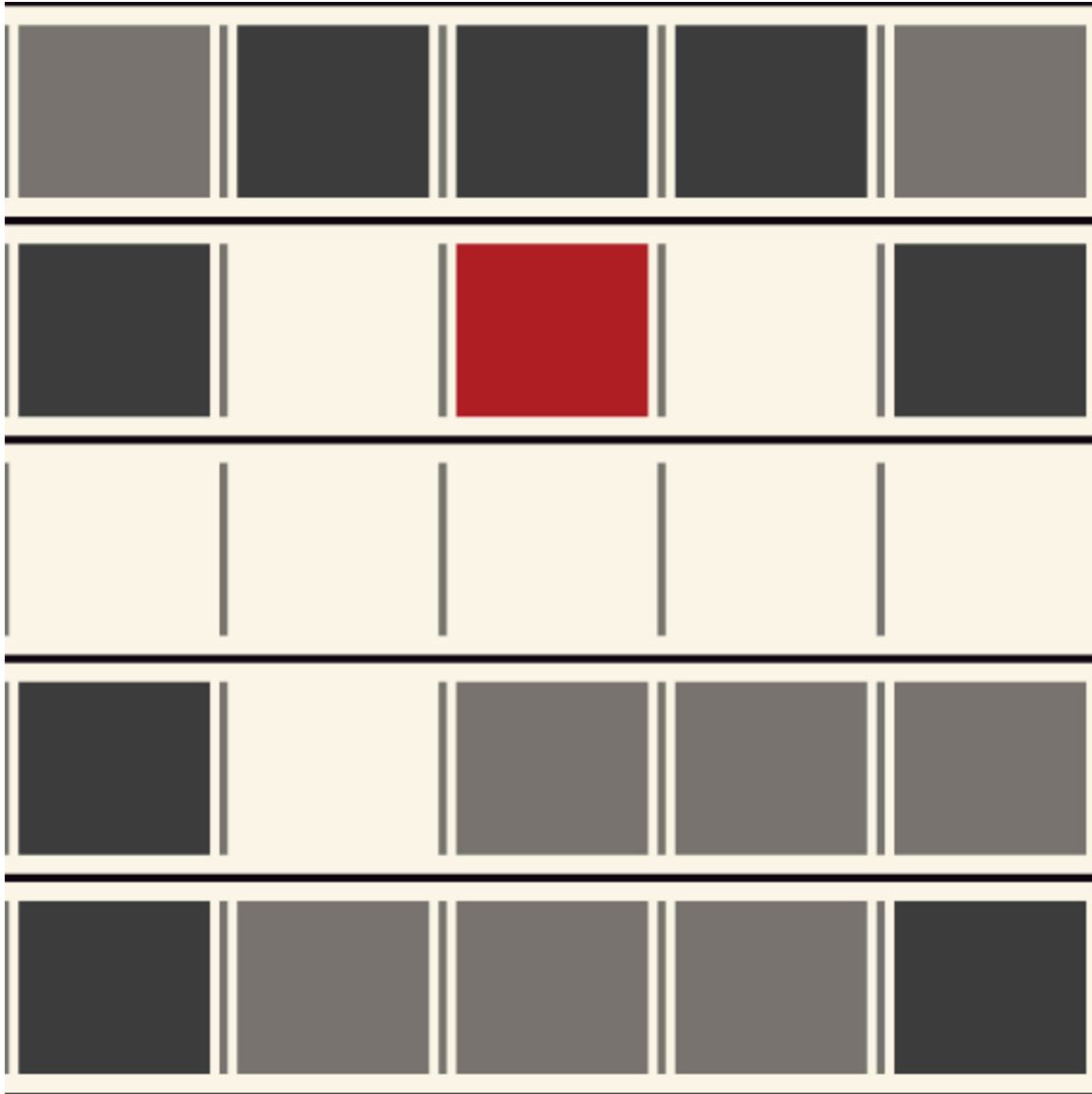
quilt q0001, block 03



rotations: quilt q0001, block 03



quilt q0001, block 04



rotations: quilt q0001, block 04

